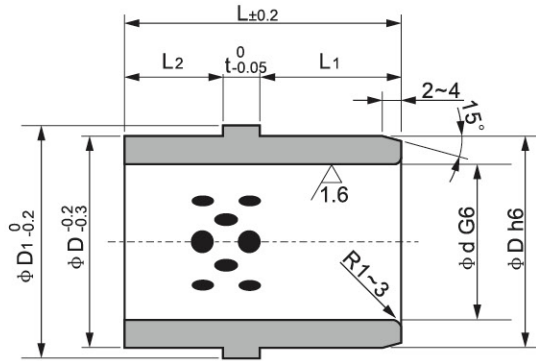


BY-5H 射出座导套 Oilless Ejector Guide Bushes



单位Unit: mm

型号 Parts No.	d	L	d G6	D h6	D ₁	L ₁	L ₂	t
BY-5H-16x26	16	26	16 ^{+0.017} / _{+0.006}	25 ⁰ / _{-0.013}	30	12	10	4
BY-5H-16x28	"	28	"	"	"	14	"	"
BY-5H-16x33	"	33	"	"	"	19	"	"
BY-5H-16x38	"	38	"	"	"	24	"	"
BY-5H-20x26	20	26	20 ^{+0.020} / _{+0.007}	30	35	12	"	"
BY-5H-20x28	"	28	"	"	"	14	"	"
BY-5H-20x33	"	33	"	"	"	19	"	"
BY-5H-20x38	"	38	"	"	"	24	"	"
BY-5H-25x26	25	26	25	35 ⁰ / _{-0.016}	40	12	"	"
BY-5H-25x28	"	28	"	"	"	14	"	"
BY-5H-25x33	"	33	"	"	"	19	"	"
BY-5H-25x38	"	38	"	"	"	24	"	"
BY-5H-30x33	30	33	30	40	45	14	15	"
BY-5H-30x38	"	38	"	"	"	19	"	"
BY-5H-30x46	"	46	"	"	"	24	"	"
BY-5H-35x38	35	38	35 ^{+0.025} / _{+0.009}	46	50	19	"	"
BY-5H-35x43	"	43	"	"	"	24	"	"
BY-5H-35x48	"	48	"	"	"	29	"	"
BY-5H-40x48	40	"	40	52 ⁰ / _{-0.019}	57	24	20	"
BY-5H-40x53	"	53	"	"	"	29	"	"
BY-5H-50x48	50	48	50	62	67	24	"	"
BY-5H-50x53	"	53	"	"	"	29	"	"

型号 Parts No.	d	L	d G6	D h6	D ₁	L ₁	L ₂	t
BY-5H-25x33	25	33	25 ^{+0.020} / _{+0.007}	35 ⁰ / _{-0.016}	40	19	6	8
BY-5H-25x38	"	38	"	"	"	24	"	"
BY-5H-30x48	30	48	30	40	45	29	11	"
BY-5H-30x47	"	47	"	42	47	24	15	"
BY-5H-30x52	"	52	"	"	"	29	"	"
BY-5H-35x63	35	63	35 ^{+0.025} / _{+0.009}	45	50	39	16	"
BY-5H-40x60	40	60	40	50	55	32	20	"
BY-5H-40x70	"	70	"	"	"	42	"	"
BY-5H-40x78	"	78	"	"	"	49	21	"
BY-5H-40x57	"	57	"	55 ⁰ / _{-0.019}	60	24	25	"
BY-5H-40x67	"	67	"	"	"	29	30	"
BY-5H-45x88	45	88	45	"	"	59	21	"
BY-5H-45x95	"	95	"	"	"	69	"	"
BY-5H-50x67	50	67	50	62	67	29	30	"
BY-5H-50x87	"	87	"	"	"	39	40	"
BY-5H-60x67	60	67	60 ^{+0.029} / _{+0.010}	74	82	29	30	"
BY-5H-60x87	"	87	"	"	"	39	40	"