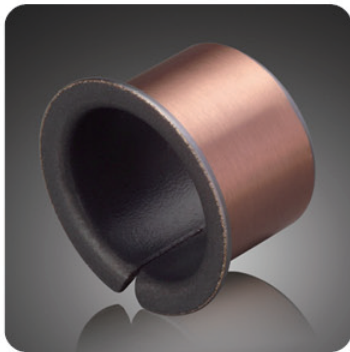


BR1F

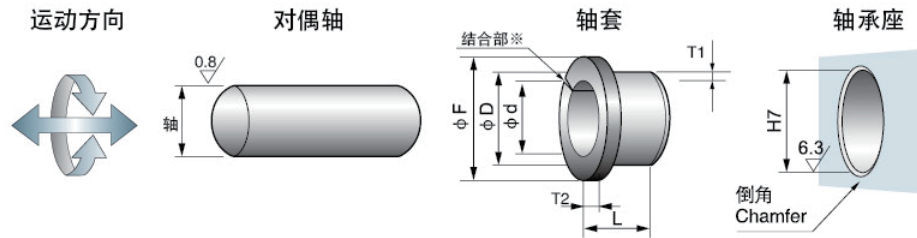
法兰轴套 Flanged bushes



请从适用的内径、外径、长度中选择零件号
(例)内径20mm、长度10mm的情况下

BR1F - 2010

请指定上述零件号



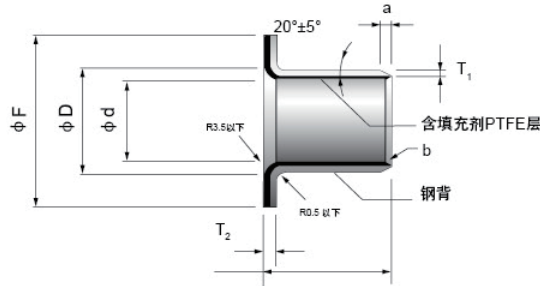
※结合部对于轴旋转没有影响，但尽量避免安装在负荷大的部位处压入。

单位Unit: mm

轴 shaft	座孔housing		内径 $\boxtimes d$	外径 $\boxtimes D$	法兰		壁厚		长度 $L \pm 0.25$				
	H7				$\boxtimes F_{\pm 0.5}$	$T_{2 \ -0.2}$	T1		3	4	5	6	
5	-0.010 -0.022	7	+0.015 0	5	7	10	1.0	1.0	+0.005 -0.020			0505	0506
6	-0.013 -0.028	8	"	6	8	12	"	"	"			0605	0606
7	"	9	"	7	9	13	"	"	"			0705	
8	"	10	"	8	10	15	"	"	"				0806
9	"	11	+0.018 0	9	11	17	"	"	"				
10	"	12	"	10	12	18	"	"	"				1006
12	-0.016 -0.034	14	"	12	14	20	"	"	"				1206
13	"	15	"	13	15	21	"	"	"				
14	"	16	"	14	16	22	"	"	"				
15	"	17	"	15	17	23	"	"	"				
16	"	18	"	16	18	24	"	"	"				
18	"	20	+0.021 0	18	20	26	"	"	"				
20	-0.020 -0.041	23	"	20	23	30	1.5	1.5	+0.005 -0.025				
22	"	25	"	22	25	32	"	"	"				
24	"	27	"	24	27	34	"	"	"				
25	"	28	"	25	28	35	"	"	"				
26	"	30	"	26	30	38	2.0	2.0	+0.005 -0.030				
28	"	32	+0.025 0	28	32	40	"	"	"				
30	"	34	"	30	34	42	"	"	"				
31	-0.025 -0.050	35	"	31	35	43	"	"	"				
32	"	36	"	32	36	44	"	"	"				
35	"	39	"	35	39	47	"	"	"				
38	"	42	"	38	42	52	"	"	"				
40	"	44	"	40	44	53	"	"	"				
45	"	50	"	45	50	60	2.5	2.5	+0.005 -0.040				
50	"	55	+0.030 0	50	55	65	"	"	"				
55	-0.030 -0.060	60	"	55	60	70	"	"	"				
60	"	65	"	60	65	75	"	"	"				

BR1F

法兰轴套 Flanged bushes



a: 外径倒角 内径 ≥ 10 以上 (mm)

T	1.0	1.5	2.0
a	0.5	0.8	1.0

b: 内径倒角 内径 ≥ 10 以上 (mm)

T	1.0	1.5	2.0
b	C0.5	C0.8	C1.0

※ 内径 ≥ 10 不到的内外径倒角去毛刺程度即可。

单位 Unit: mm

长度 L ± 0.25									内径
7	8	10	12	15	20	25	30	40	Φd
									5
0607	0608								6
0707									7
	0808	0810	0812						8
		0910							9
1007	1008	1010	1012	1015					10
1207	1208	1210	1212	1215					12
		1310		1315					13
		1410	1412	1415					14
		1510	1512	1515	1520				15
		1610		1615	1620				16
		1810	1812	1815	1820				18
		2010	2012	2015	2020	2025			20
		2210	2212	2215	2220				22
				2415	2420	2425			24
		2510	2512	2515	2520	2525			25
				2615	2620				26
			2812	2815	2820				28
			3012	3015	3020	3025	3030		30
						3125			31
					3220	3225	3230		32
			3512		3520	3525	3530	3540	35
					3820				38
			4012		4020	4025	4030	4040	40
					4520	4525	4530	4540	45
					5020		5030	5040	50
							5530	5540	55
							6030	6040	60